

Fact Sheet 2012



Corporate Profile

Copel – Companhia Paranaense de Energia – generates, transmits, distributes and trades electric energy, and also provides telecommunication services. The Company is one of the largest electric power facilities in Brazil. The Company's position in the sector is a result of 58 years of experience and technical proficiency in generating, transmitting and distributing electric power.

Copel went public in April 1994 on Bolsa de Valores de São Paulo BM&FBOVESPA - and, in July 1997, became the first company of the Brazilian electric power sector with shares traded on the New York Stock Exchange. Copel's shares are also traded in Europe, on the Latibex – the Latin American arm of the Madrid Stock Exchange, since June 2002. In May 2008 COPEL joined BM&FBOVESPA's Level 1 of Corporate Governance.

Currently, Copel directly serves 4 million customers units in 395 municipalities and 1,120 localities (districts, villas and villages). Copel holds 20 own power plants and has interests in other 6 generation companies, totaling 4,737 MW of installed capacity. In order to transmit and distribute the electric power generated, the Company counts on 2,023 km of transmission lines and 186,365 km of distribution lines, being the third largest network in Brazil. Copel's staff is composed by 9,211 employees.

Copel Distribuição's captive market grew by 3.5% in 2012. The main customer segments varied as follows: industrial, (0.8%); residential, 5.4%; commercial, 5.9% and rural, 8.2%



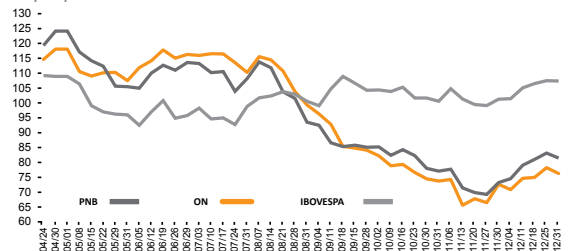
Stock Performance

Market Information (12/31/2012)

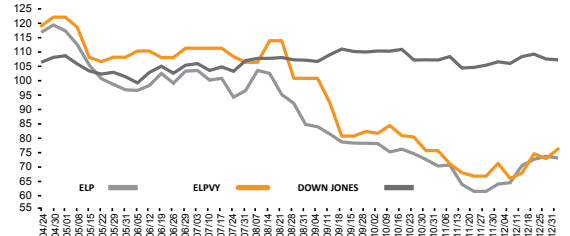
Year	BM&FBOVESPA (Common Shares - R\$)	BM&FBOVESPA (Preferred Shares - R\$)	NYSE (ADR) (Preferred Shares - US\$)	LATIBEX (Preferred Shares - €)
Ticker	CPL3	CPL6	ELP	XCOP
Price per Share / ADR	25.20	31.70	15.28	11.62
Maximum Price -52 weeks	39.00	48.29	26.03	19.88
Minimum Price - 52 weeks	20.80	26.40	12.75	9.79

Number of Shares	273,655,375
ON	145,031,080
PNA	383,993
PNB	128,240,302

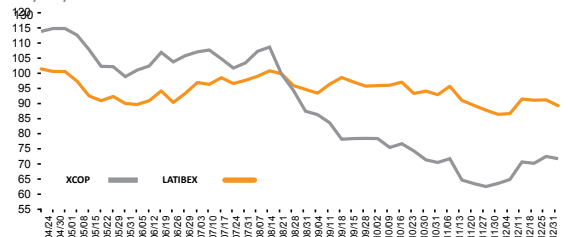
STOCK PERFORMANCE AT BM&FBOVESPA
12/31/12 = 100



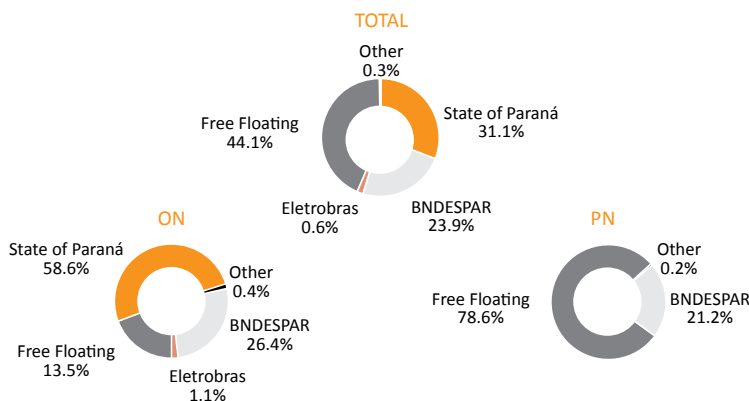
STOCK PERFORMANCE AT NYSE
12/31/12 = 100



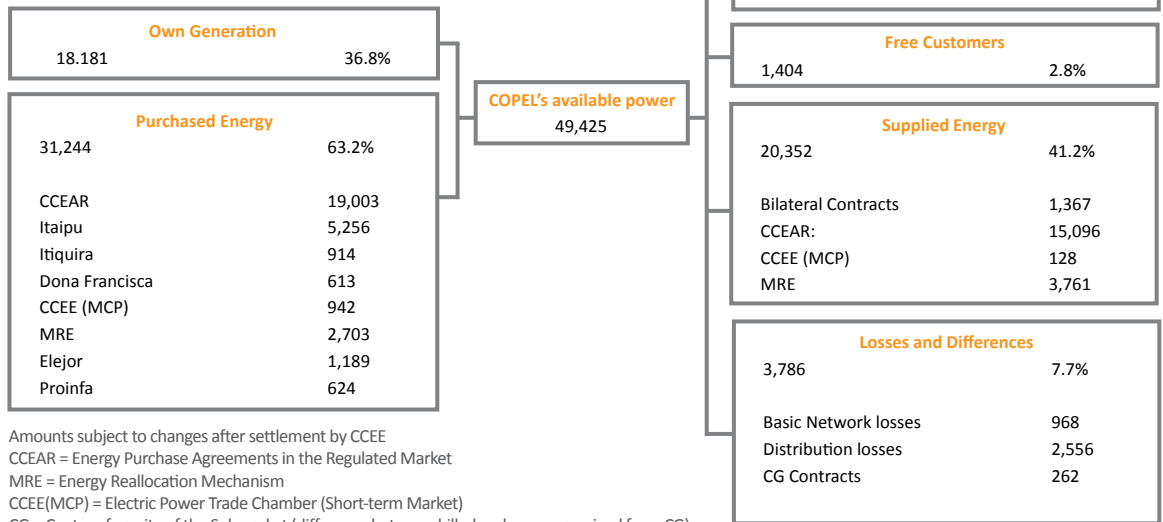
STOCK PERFORMANCE AT LATIBEX
12/31/12 = 100



Ownership Breakdown



Consolidated Energy Flow



Amounts subject to changes after settlement by CCEE
 CCEAR = Energy Purchase Agreements in the Regulated Market
 MRE = Energy Reallocation Mechanism
 CCEE(MCP) = Electric Power Trade Chamber (Short-term Market)
 CG = Center of gravity of the Submarket (difference between billed and energy received from CG)

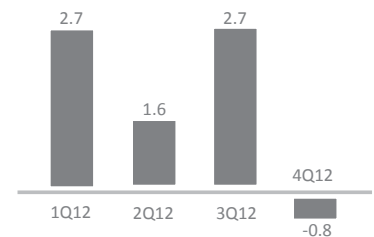
Highlights

	2012	2011	%
Net Operating Revenues	8,532,217	7,776,165	9.7
Operating Costs and Expenses	(7,542,738)	(6,472,671)	16.7
EBITDA	1,551,107	1,912,313	(18.9)
Net Income (Controlling Shareholders)	726,520	1,176,854	(38.3)

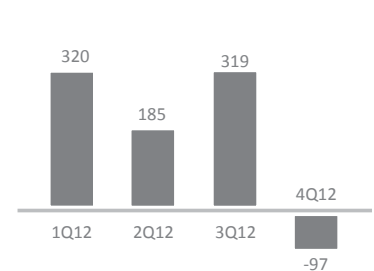
Debt

	Short Term	Long Term	Total
Foreign Currency			
National Treasury	3,311	56,029	59,340
Eletrobras	6	5	11
Total	3,317	56,034	59,351
Local Currency			
Eletrobras - Copel	54,204	178,841	233,045
FINEP	2,014	27,511	29,525
BNDES - Mauá	33,131	353,967	387,098
Banco do Brasil S/A and other	168,624	1,373,235	1,541,859
Debêntures/Debentures	12,719	997,958	1,010,677
Total	270,692	2,931,512	3,202,204
Total	274,009	2,987,546	3,261,555

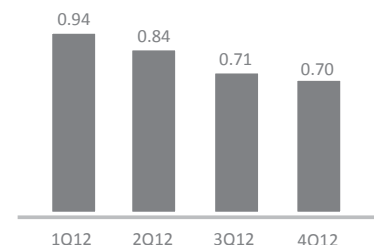
ROE (%)



Consolidated Net Income (R\$ million)



Price / Book Value (x)



Indebtedness / Shareholders' Equity (%)



IR Contact:

Phone: +55 41 3222-2027
 ri@copel.com

www.copel.com/ir

